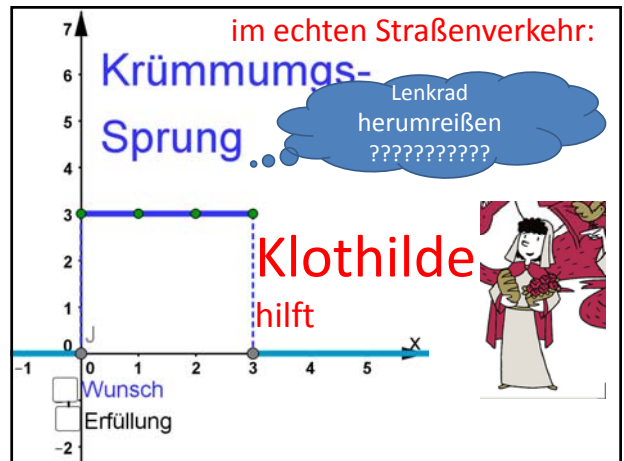
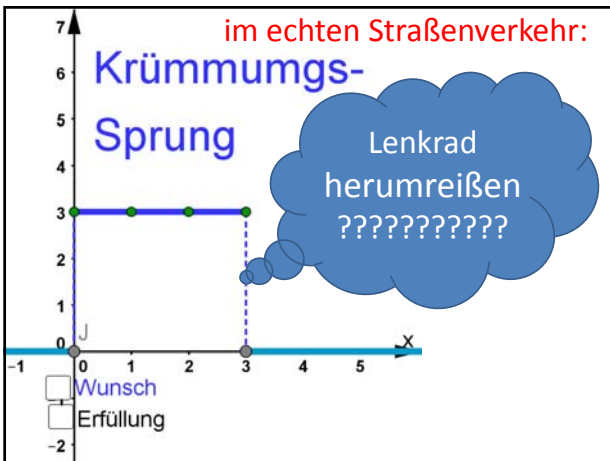
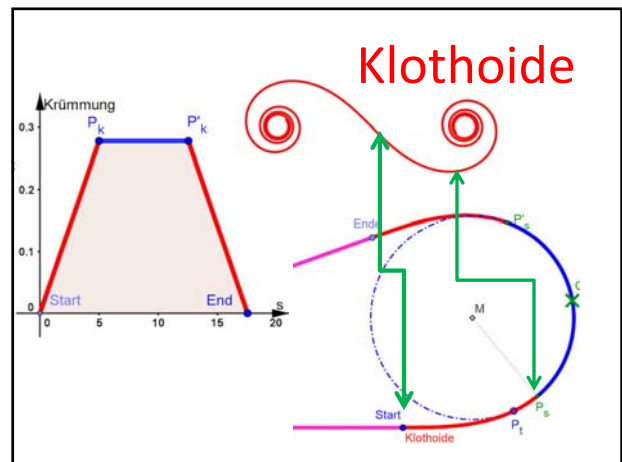
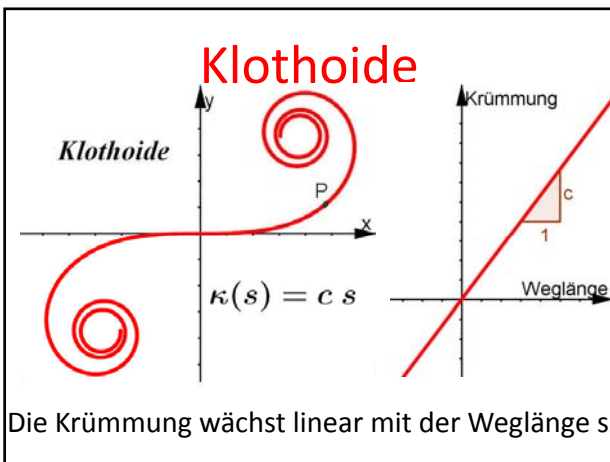
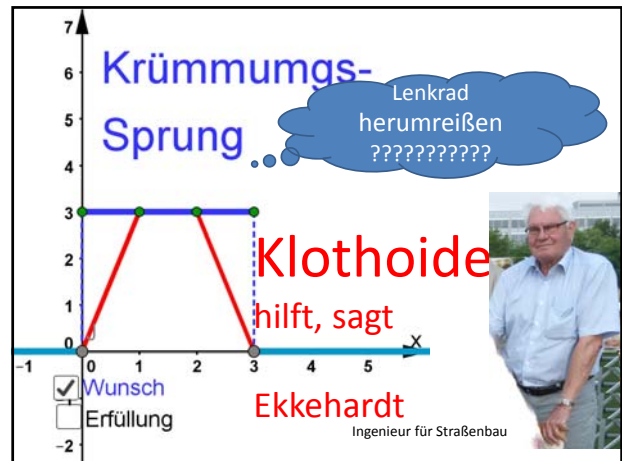
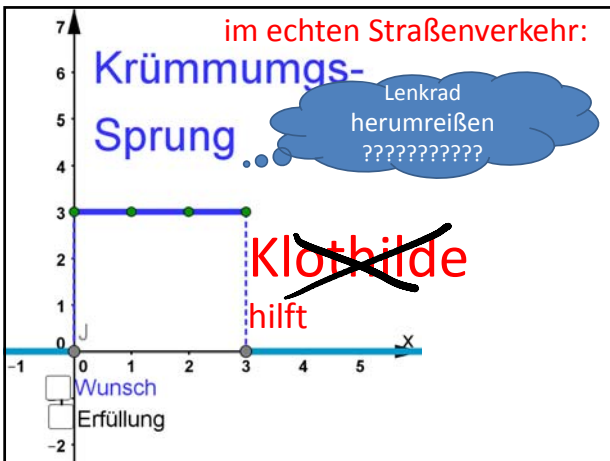


Die Klothoide

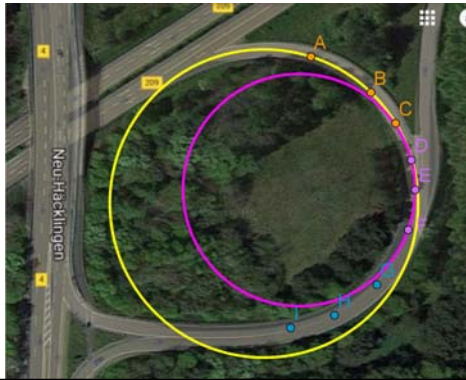


science-slam
 Dörte Haftendorn
 8.12.2016 Leuphana Universität
 Lüneburg

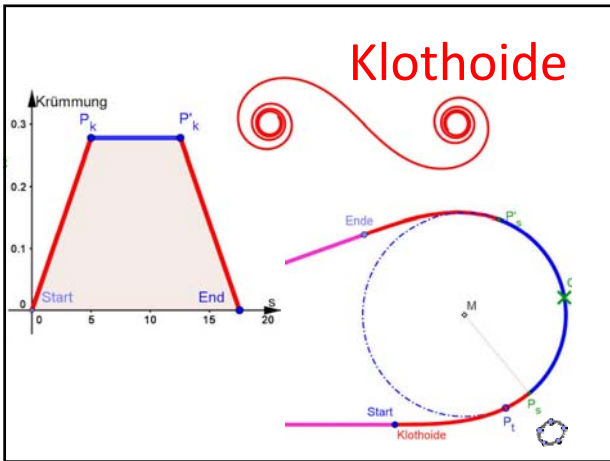
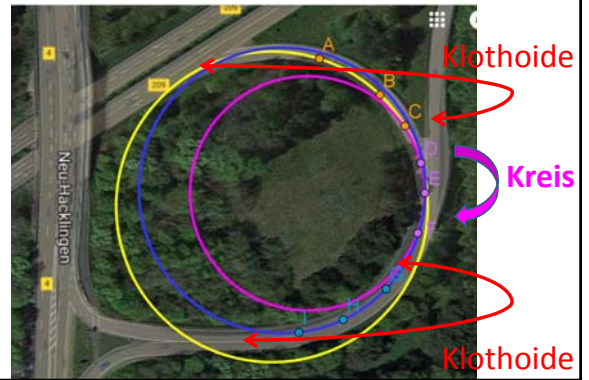




Lüneburg: Ostumgehung B 209 und B4



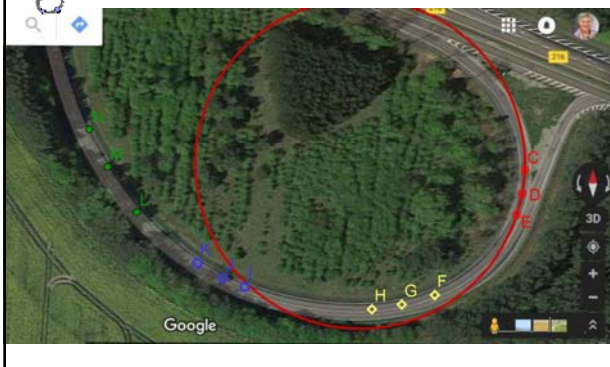
Lüneburg: Ostumgehung B 209 und B4



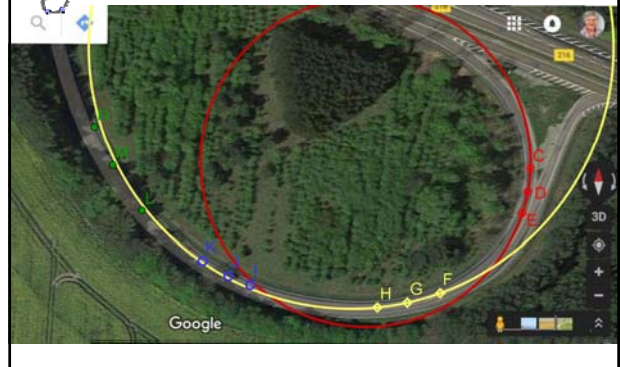
B 216, abbiegen nach Bleckede

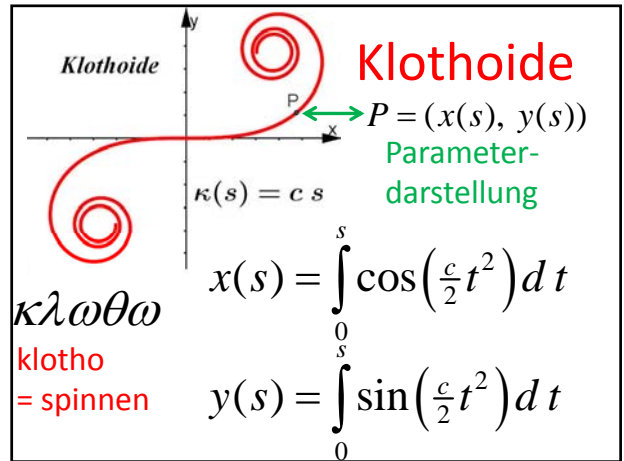
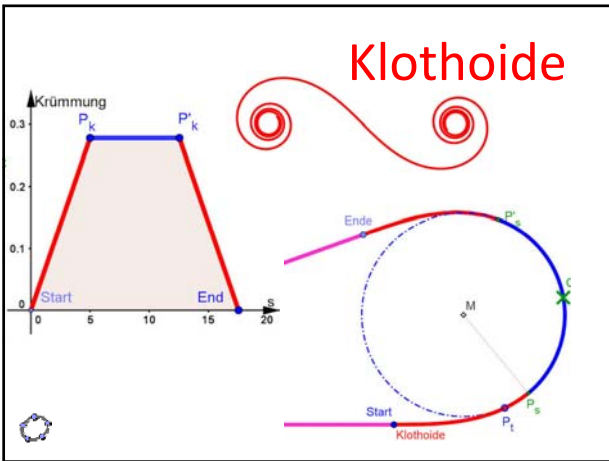
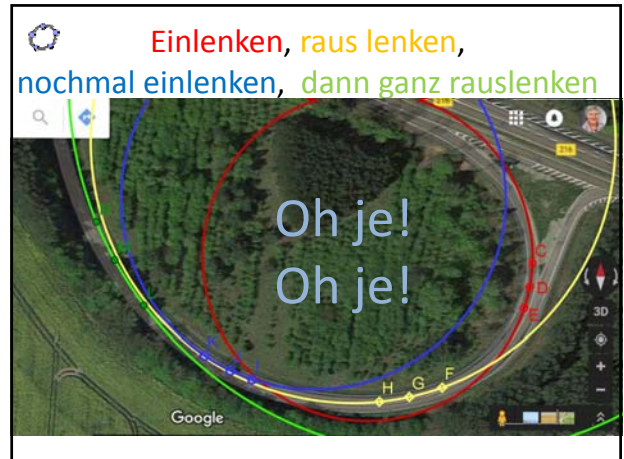
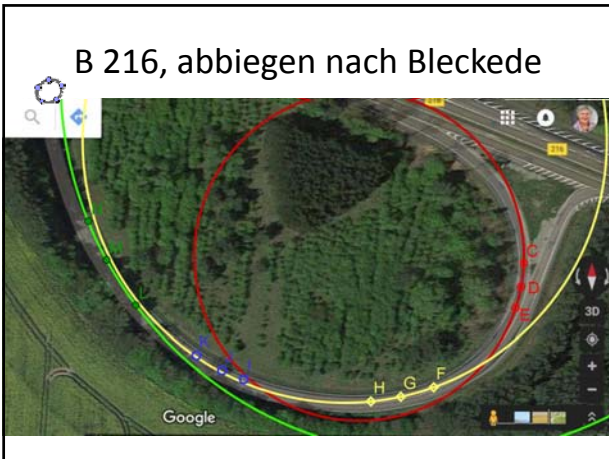


B 216, abbiegen nach Bleckede



B 216, abbiegen nach Bleckede





Keine
Straße
ohne
Klothoide



sagt
Ekkehardt

Na, wie viele Klothoiden hatten Sie denn heute schon ?

www.kurven-erkunden-und-verstehen.de